

OPERATION MANUAL SGX-E20R

Table of contents listing various languages and their corresponding page numbers for the operation manual.

Table of contents listing various languages and their corresponding page numbers for the operation manual.

Table of contents listing various languages and their corresponding page numbers for the operation manual.

Table of contents listing various languages and their corresponding page numbers for the operation manual.

Table of contents listing various languages and their corresponding page numbers for the operation manual.

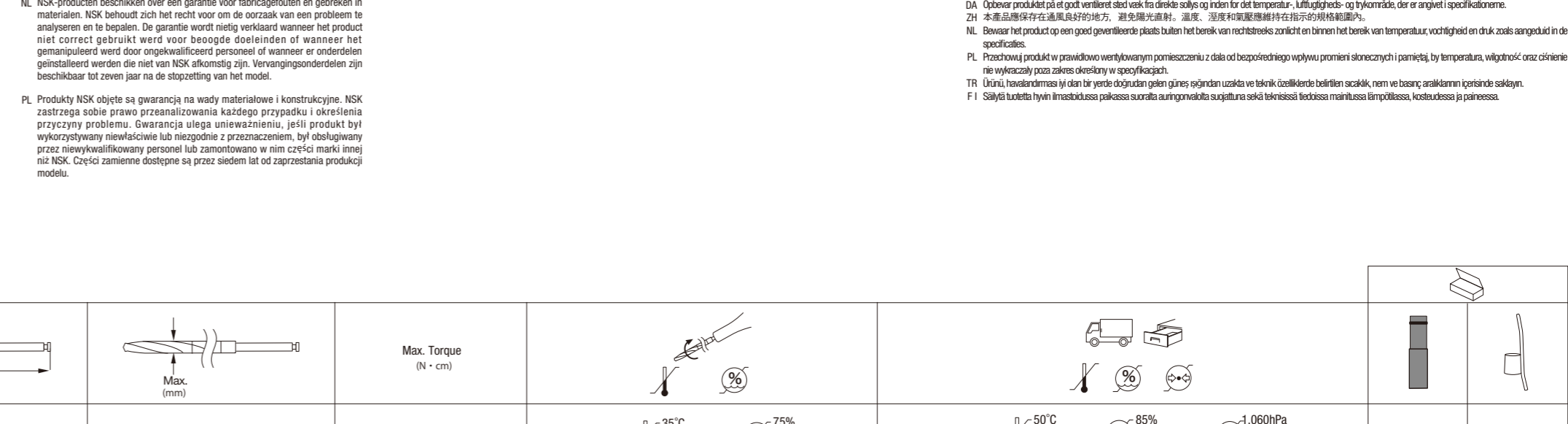
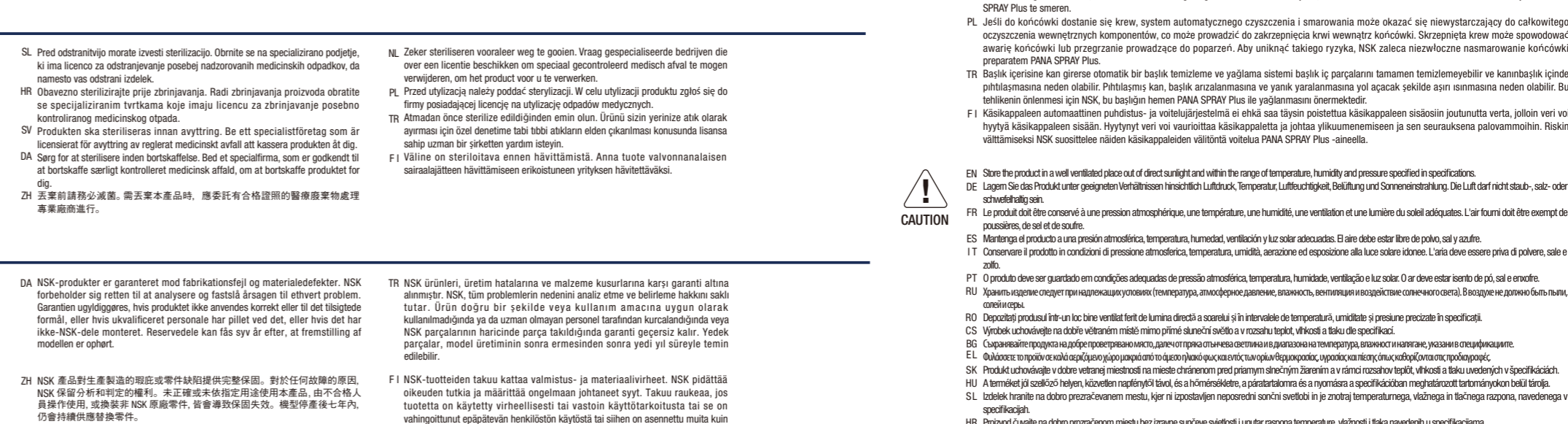
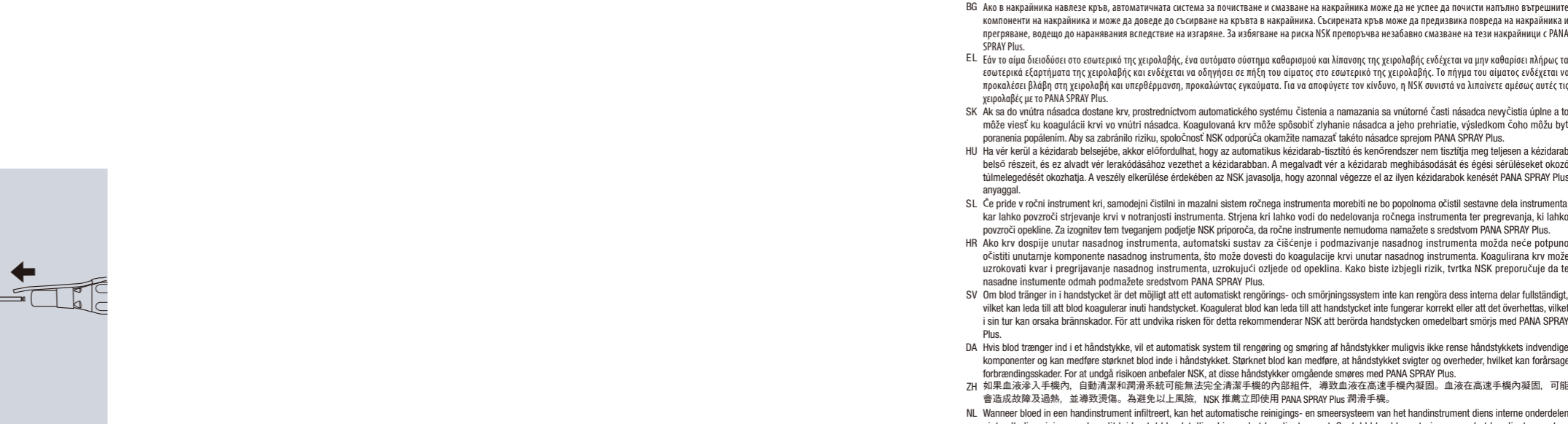
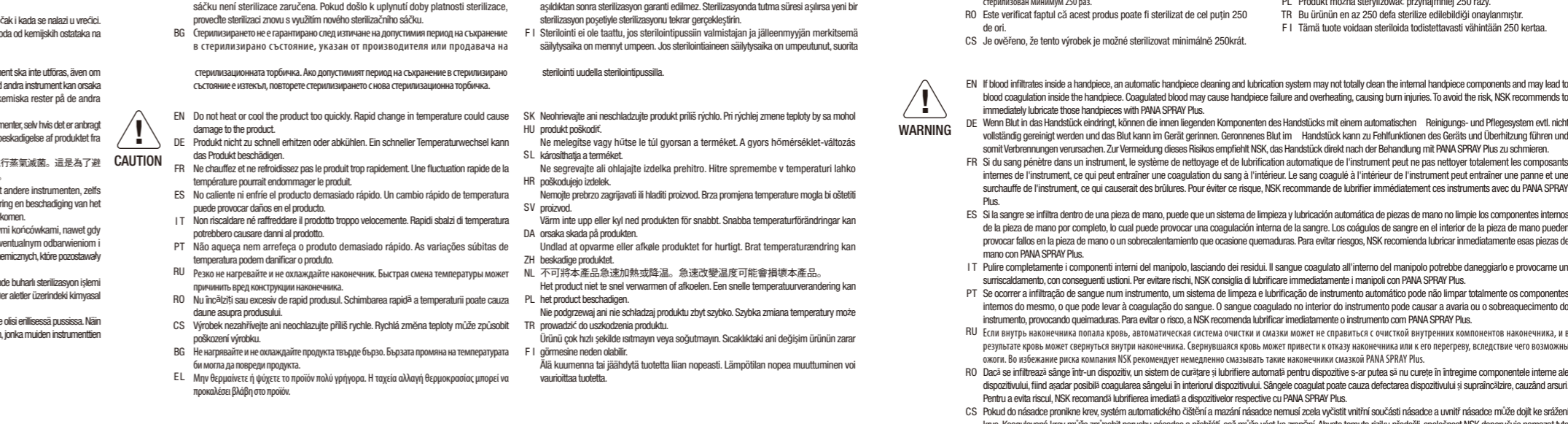
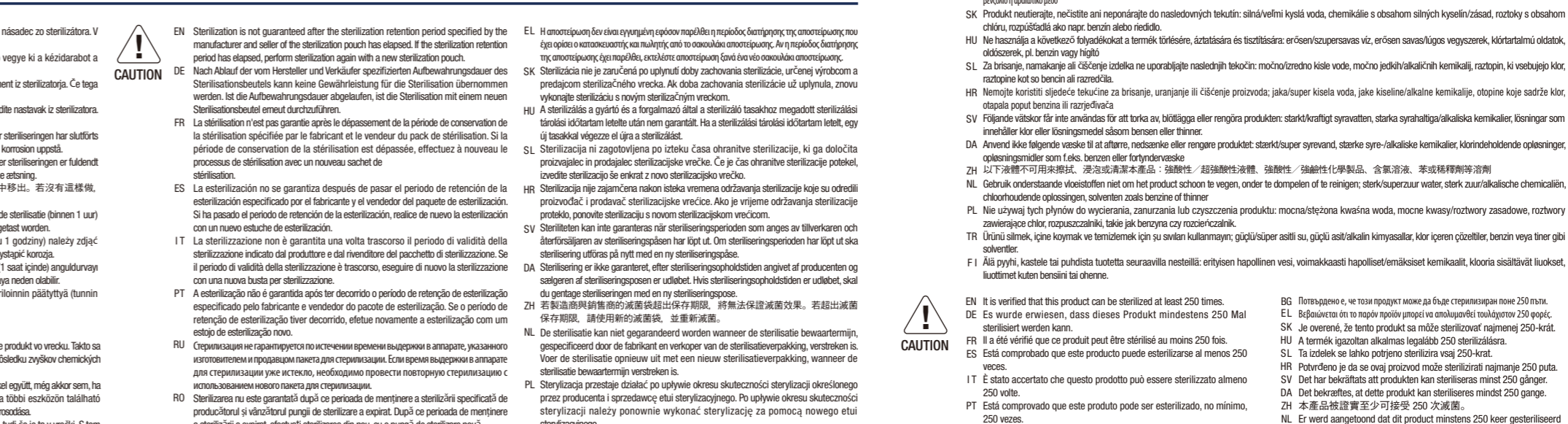
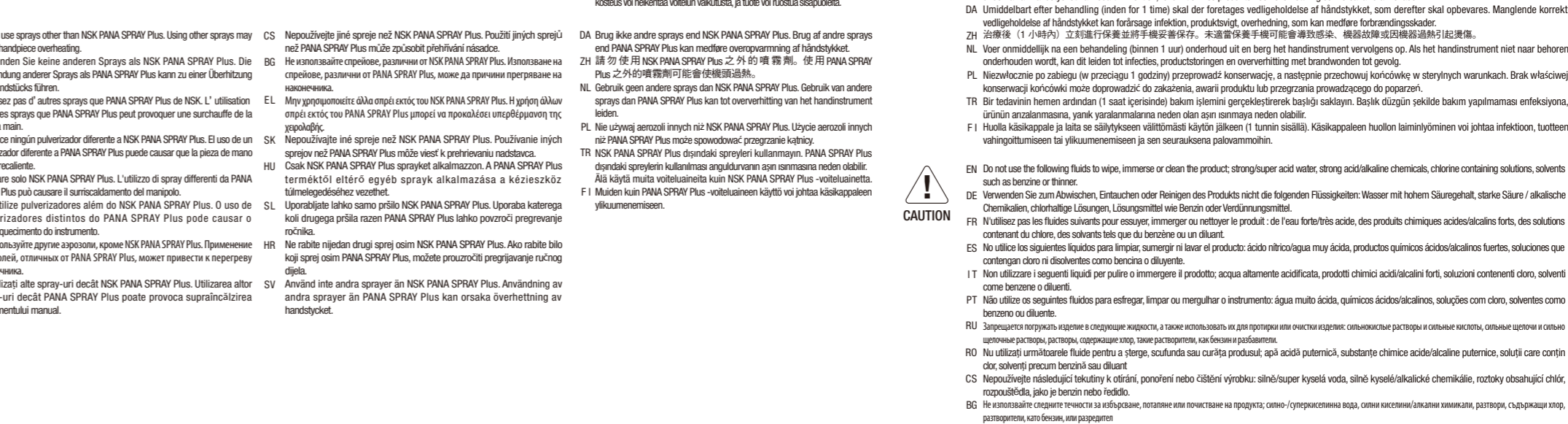
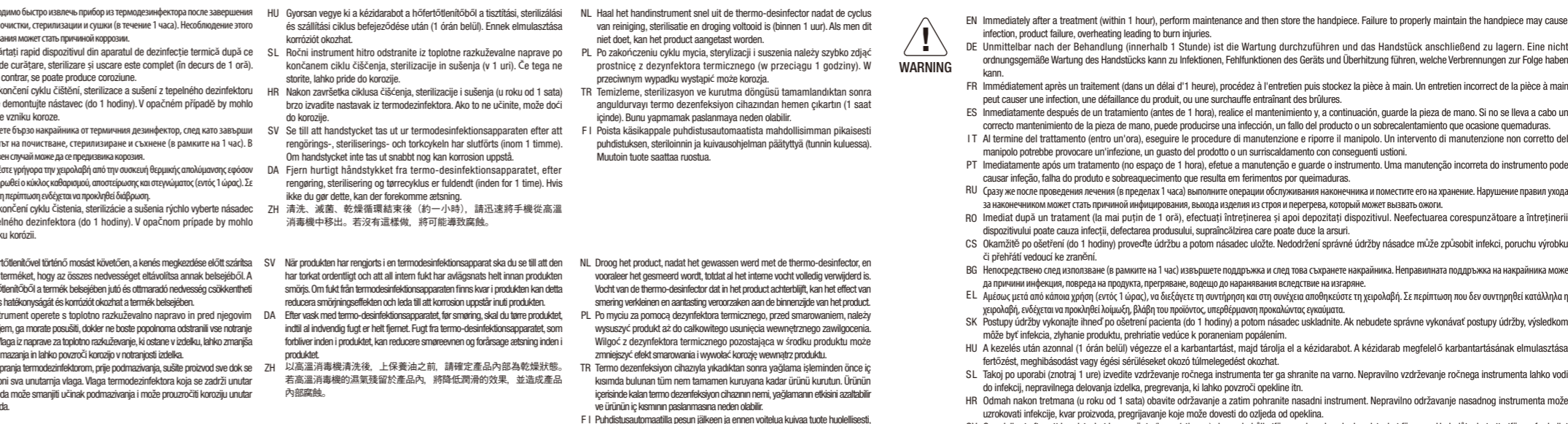
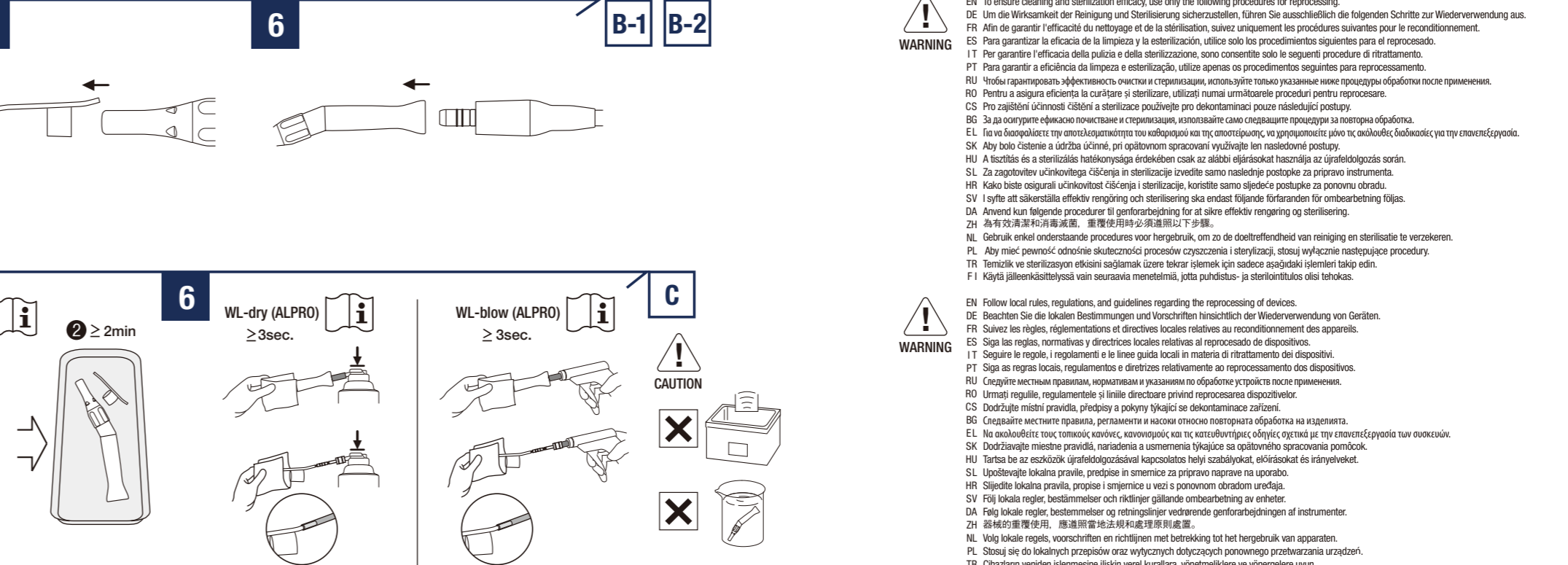
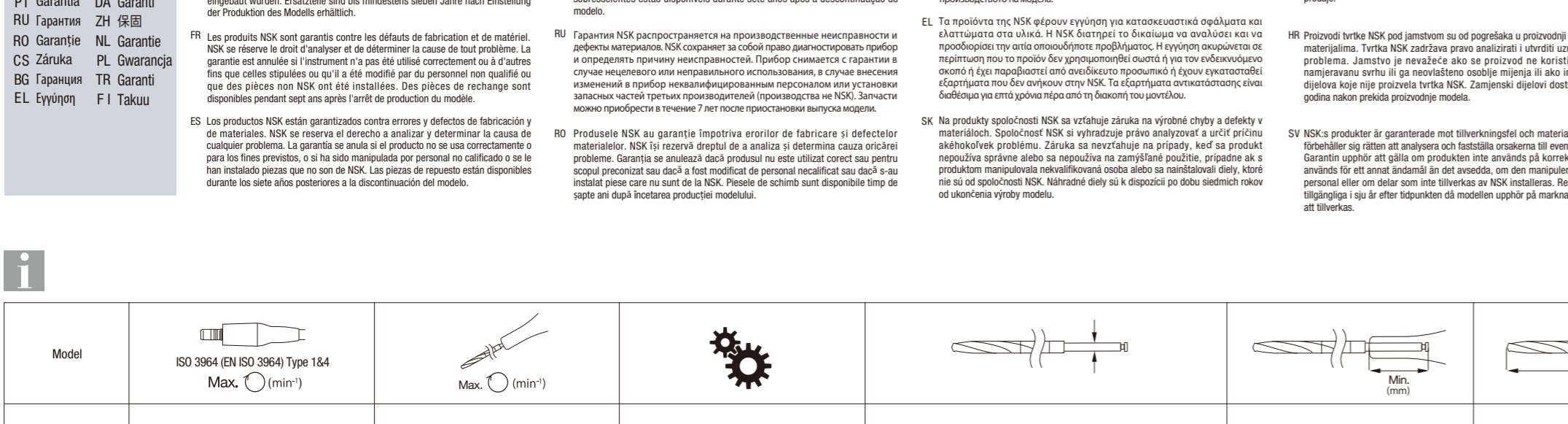
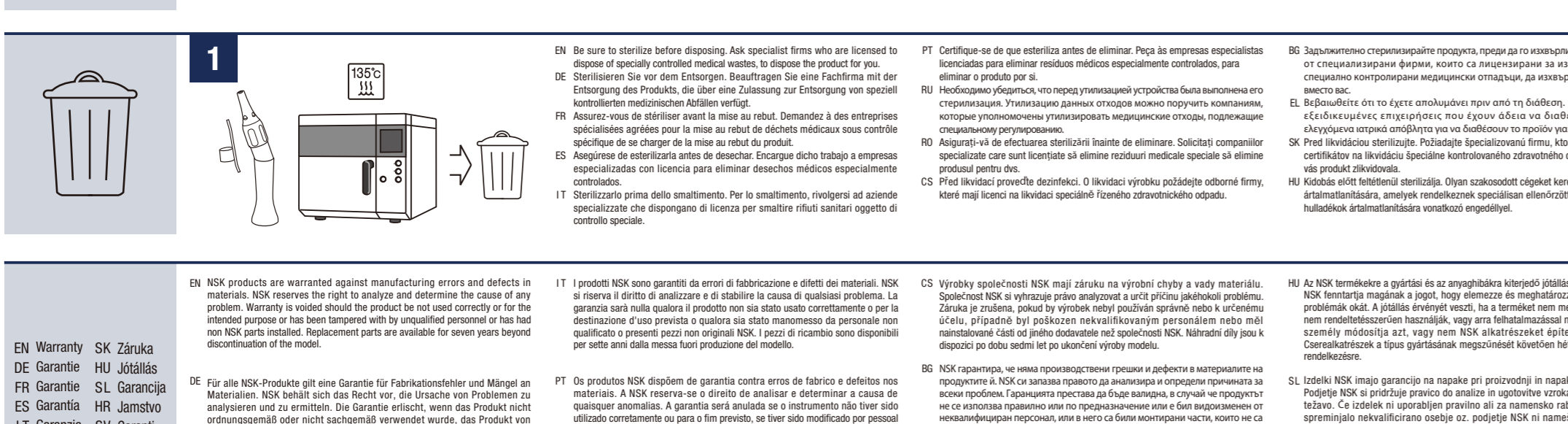
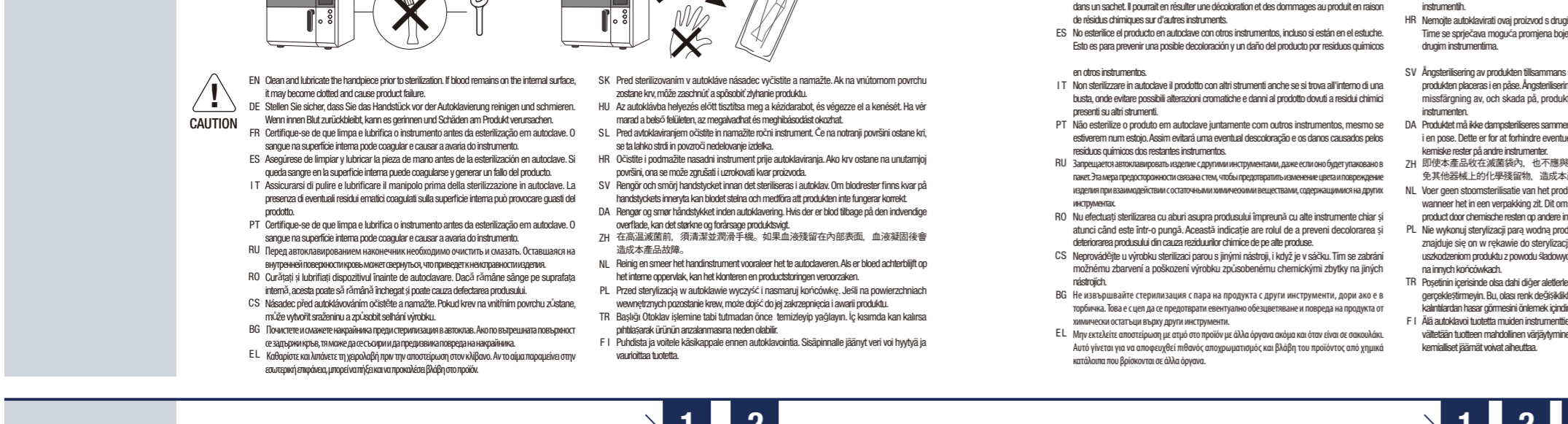
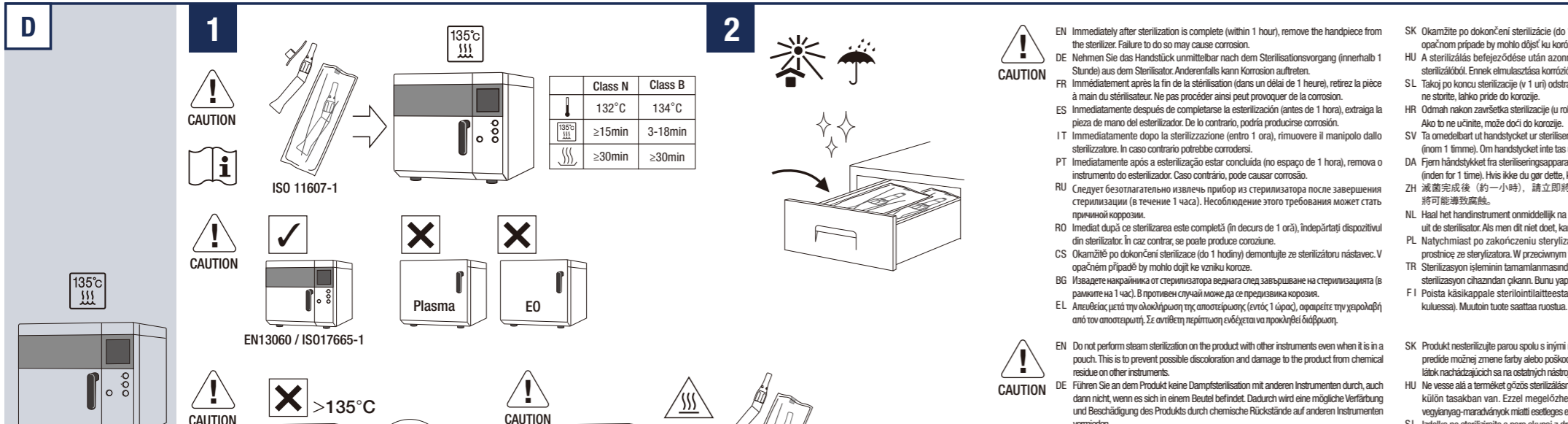
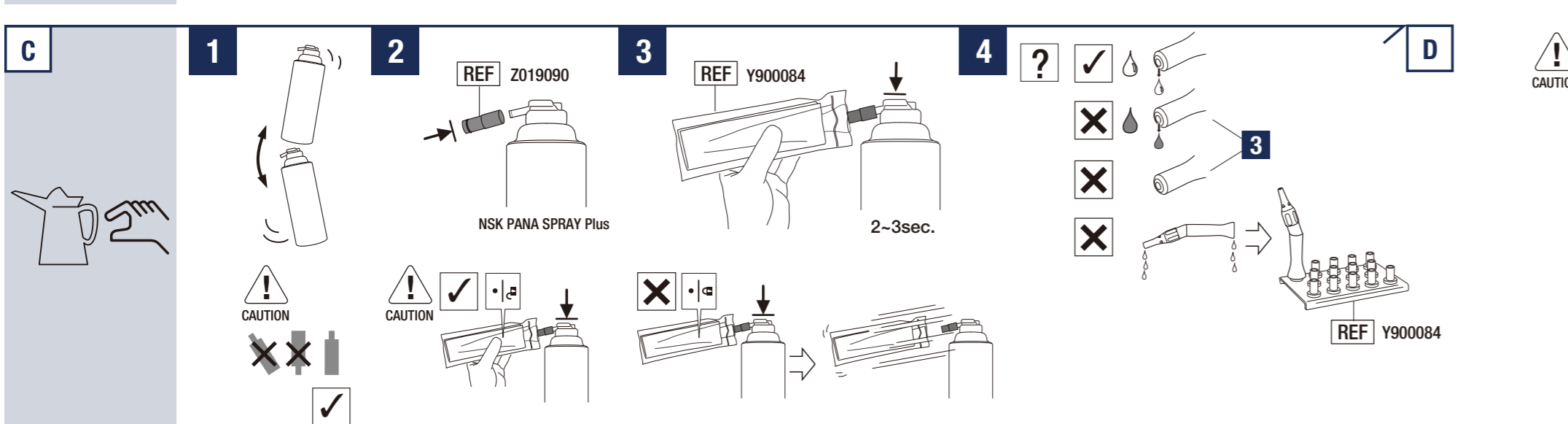
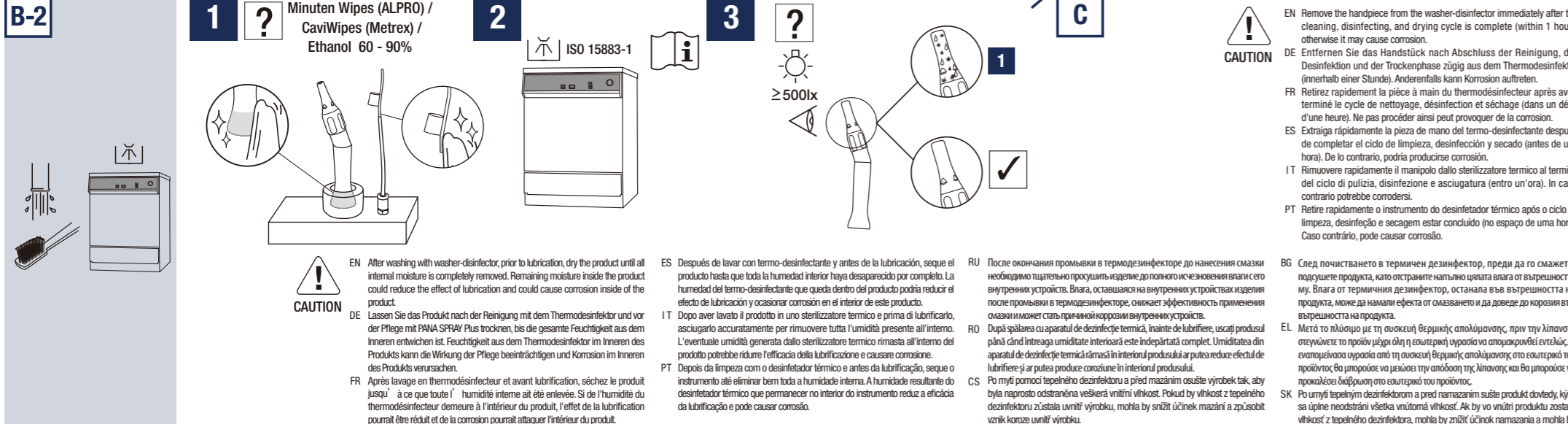
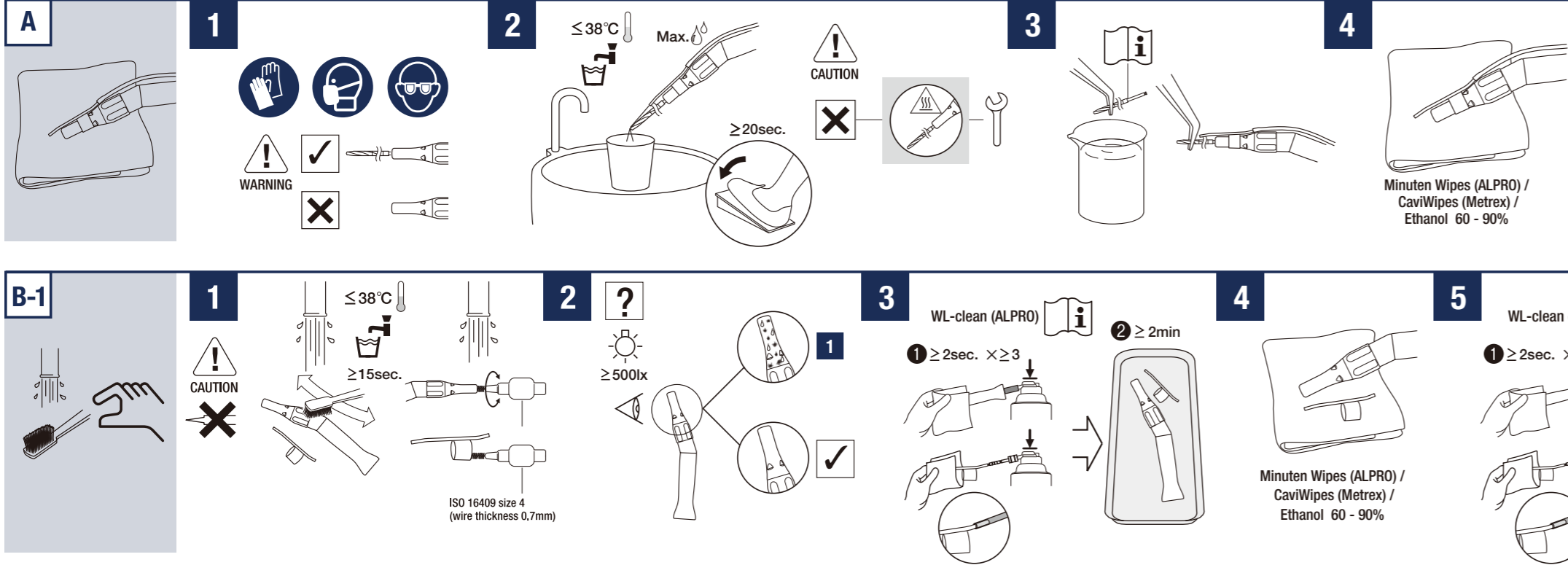
Table of contents listing various languages and their corresponding page numbers for the operation manual.

Table of contents listing various languages and their corresponding page numbers for the operation manual.

Table of contents listing various languages and their corresponding page numbers for the operation manual.

Table of contents listing various languages and their corresponding page numbers for the operation manual.

Table of contents listing various languages and their corresponding page numbers for the operation manual.



Model	ISO 3964 (EN ISO 3964) Type 164	Max. (min)	Max. (min)	Max. Torque (N·cm)
SD-E20R	40.00	2.200	18.1: Reduktion	100°C 35°C 30% 96% 75%
ISO 1797-1 (EN ISO 1797-1) Type 02.35mm Surgical Bur Drill	12.3	12.3		10°C 35°C 30% 96% 75%